

# Getting Started with the Follett 7100™ Scanner

---

## Overview

The Follett 7100™ handheld wireless device allows you to perform many circulation, inventory, and collection and patron maintenance tasks remotely.

If you have Destiny® and a wireless network, the 7100's customized browser communicates directly with Destiny, allowing you to perform real-time transactions. When you are out of range of your wireless network or when your Destiny server is not available, you can use Follett Remote, a self-contained application that allows you to collect barcode scans offline. Follett Remote records the information in data files that you later upload to your circulation system.

This document guides you through charging and setting up your 7100 and communicating with your workstation or wireless network. It includes the following sections:

- Getting Started
- Managing the Batteries
- Features of the 7100
- Setting Up the 7100
- Communicating with the 7100

## Resources to help you

### All Customers

For information on using your 7100 scanner, please view the eLearning available through the Follett School Solutions website at <http://www.follettsoftware.com>.

## Getting Started

If you have just received your Follett 7100, verify that the carton contains the following items:

- 7100 mobile computer (the terminal)
- Main battery pack (3.7v, Li-ion)
- AC power supply
- Localized plug adapters

**Note:** Be sure to keep the original packaging in case you need to return the 7100 terminal for service.



### Managing the Batteries

Once you have verified that you have everything you need, you next need to insert and charge the batteries.

The 7100 has two types of battery power: the main battery pack on the back panel and the backup battery located inside the 7100. The batteries work together to prevent data loss when you use the 7100 for long periods.

The 7100 ships with the main battery pack packaged separately from the unit, so you must insert the main battery into the terminal to charge both batteries.

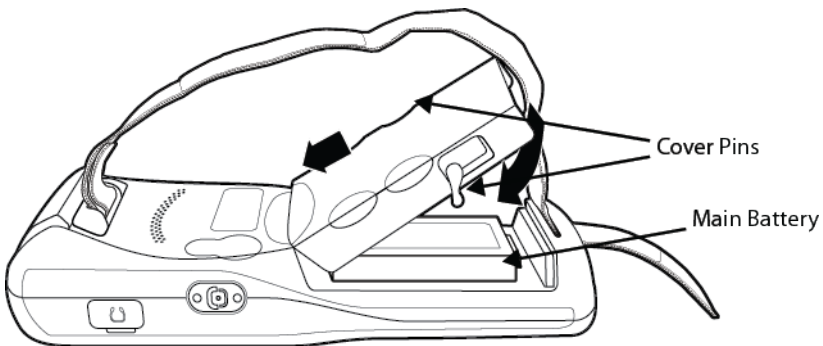
**Important:** You must charge both batteries to full capacity before using the 7100 for the first time.

#### Inserting the main battery pack

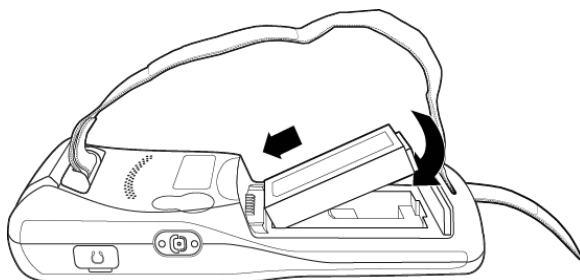
1. Release the hand strap to access the battery compartment more easily.
2. Remove the battery compartment cover by turning the cover's pins upward and lifting the cover.
3. Insert the battery into the battery well with the label facing upward and the contacts facing downward.
4. Replace the cover by inserting the top edge of the cover first, then the bottom. Turn the pins downward.

**Note:** The battery cover must be in place before booting the unit.

5. Replace the hand strap.



Turn the cover pins upward and remove the cover to access the battery.



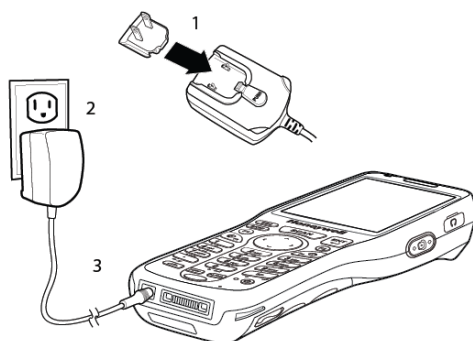
Lift the bottom of the battery first to remove it from the device.

### Charging the main battery pack

The 7100 terminal ships with both the main battery pack and internal backup battery significantly discharged of power. Before initial use, charge the main battery pack with the 7100 charging cable for a minimum of 4 or 6 hours depending on your battery.

**Important:** Use only the peripherals, power cables, and power adapters from the manufacturer. Use of peripherals, cables, or power adapters from other manufacturers will void the warranty and may damage the 7100.

1. Attach the appropriate plug adapter to the plug of the power cable.
2. Insert the plug into an appropriate power source.
3. Plug the 7100 power cable into the DC Power Jack on the bottom end of the unit.



**Note:** If you remove the main battery pack or it discharges completely, there is a 30-minute window in which

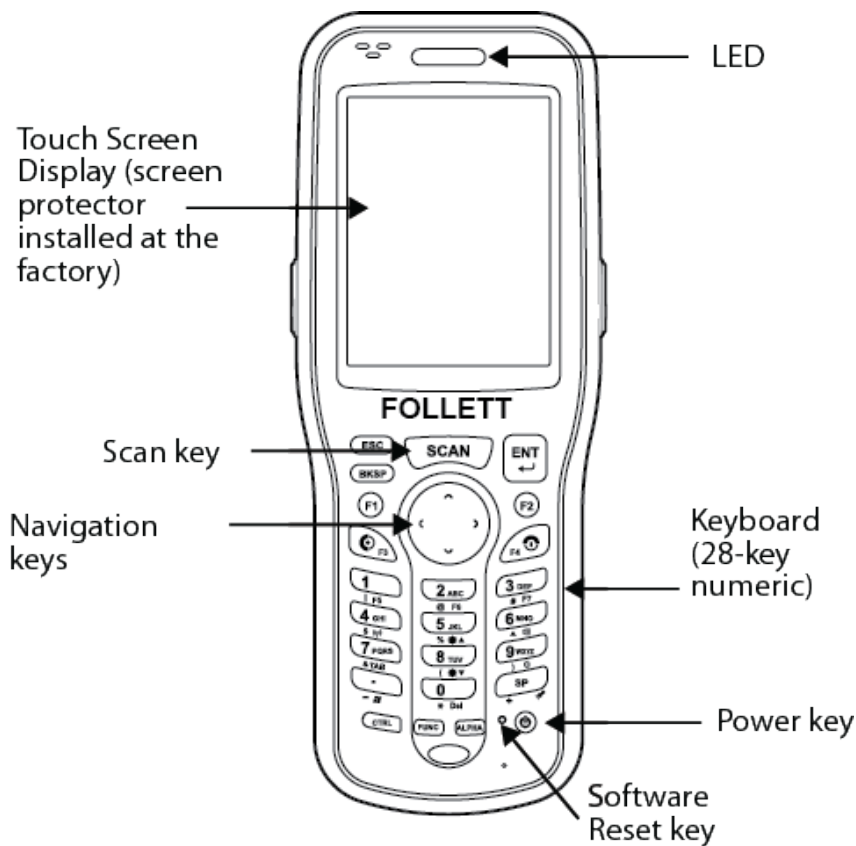
to insert a charged battery pack before the backup battery discharges completely. If your backup battery discharges completely, the contents of the RAM memory will be lost. A backup battery that is less than fully charged has a proportionally smaller window of time available.

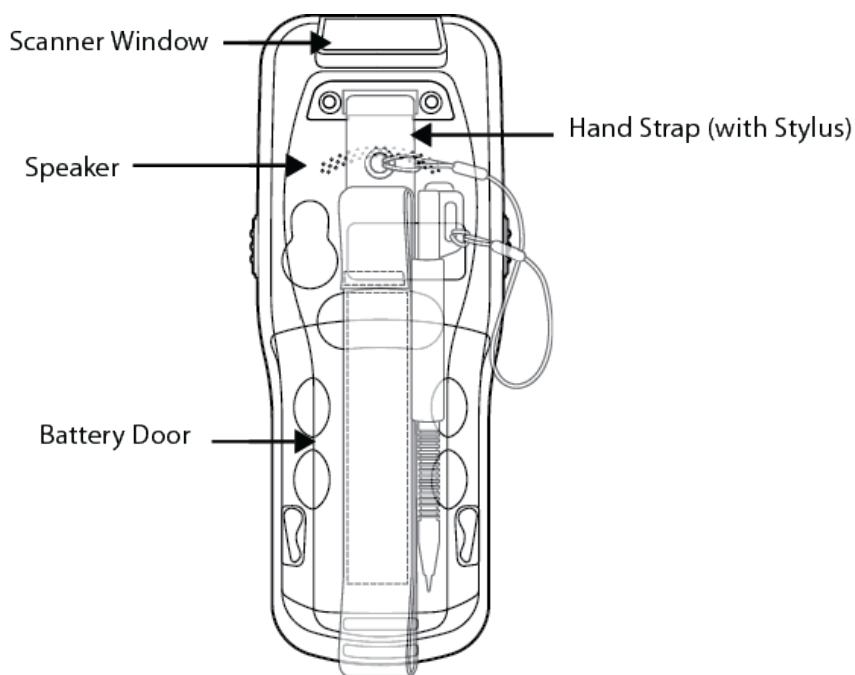
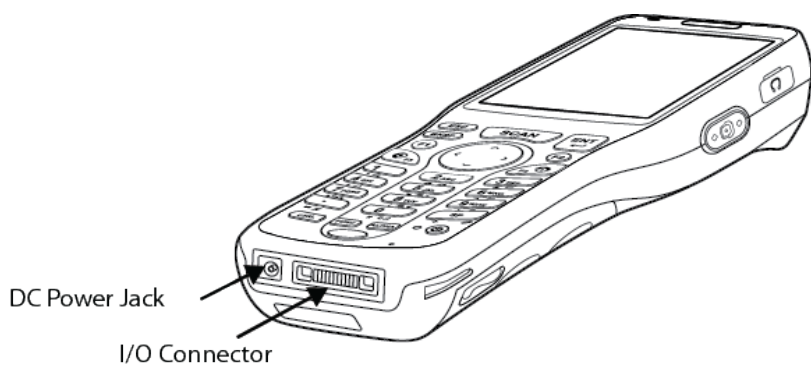
### LED Indicators

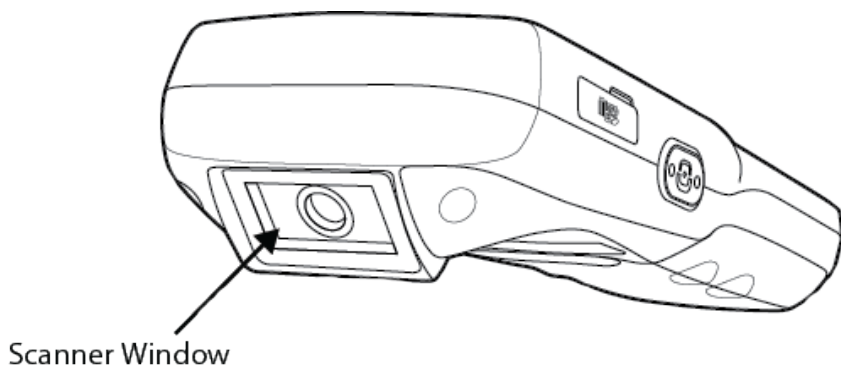
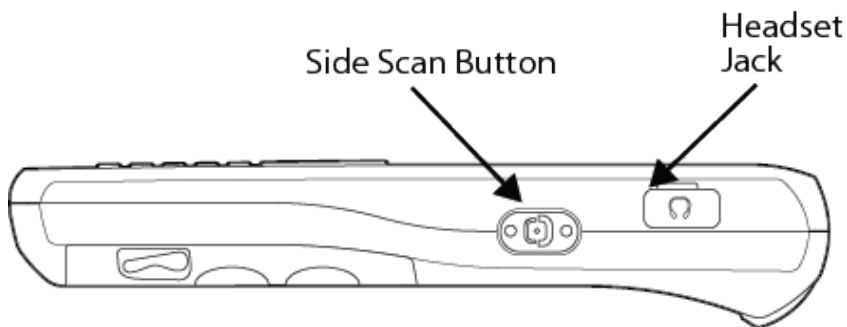
Red LED On	Charging
Green LED On	Battery is full of fully charged

## Features of the 7100

Take a moment to become familiar with the layout of the keypad and the functions of the various keys.







### Touch screen display

The display is an LCD (Liquid Crystal Display) with a 4-wire analog resistive touch screen. The 2.8" (1/4) VGA (Video Graphic Array) features transmissive active matrix color, backlighting, and 240 x 320 resolution.

### Care and cleaning of the 7100

When needed, clean the scanning lens and the LCD display with a clean, nonabrasive, lint-free cloth. You can clean the 7100 case with a damp cloth.

The 7100 ships with a screen protector already installed over the touch screen lens to help prevent damage that may occur due to frequent use. If you wish to remove this screen protector, do NOT do so before initial use.

### Using the Follett 7100 stylus

The 7100 comes with a stylus, located in the cloth stylus slot on the back of the hand strap. Use this stylus (or your finger) to select or enter information on the touch screen display. The stylus functions like a mouse; generally, a tap is the same as a click.

**Tap:** Tap the touch screen once to open menu items and select options.

**Drag:** Hold the stylus on the screen and drag it across the screen to select text and images.

**Tap & hold:** Tap and hold the stylus on an item and a pop-up menu appears.

**CAUTION:** Use of objects, such as paper clips, pencils, or ink pens on the touch screen can damage the input panel and may cause damage not covered by the warranty.



### Basic keys

Name	Function
ALPHA	Toggles keyboard between alphabetic (upper and lowercase) and numeric modes. Indicator on command bar changes accordingly.
BKSP (Backspace)	Performs the same function as the Backspace key on a workstation keyboard.
CTRL (Control)	When pressed with another key, modifies the other key to type specific characters or performs a certain function.
ESC (Escape)	Cancels an action.
ENT (Enter)	Performs the same function as the Enter key on a workstation keyboard.
POWER	Suspends and resumes the terminal.
SCAN	Activates the image engine to scan a barcode or take an image.
SPACE	Performs the same function as the Space bar on a workstation keyboard.

## Alphanumeric keyboard

The keyboard defaults to numeric mode. Use the ALPHA key to toggle between numeric and alphabetic modes. Pressing the ALPHA key once locks the keyboard in numeric mode, press it again to lock it in lowercase alphabetic mode, and once again to lock it in uppercase alphabetic mode. An icon on the command bar indicates the alpha/numeric status of the keyboard.



## Function keys

Pressing the **FUNC** key with another key enables a new function on your device. For example, pressing **FUNC** with the **5** key increases the brightness of the screen.

Key Combination	Function
FUNC + 1	F5 (Launches internet access)
FUNC + 2	F6 (launches Control Panel)
FUNC + 3	F7 (Tab)
FUNC + 4	Toggles wireless radio on and off
FUNC + 5	Increases screen brightness
FUNC + 6	Increases volume
FUNC + 7	Same as Tab
FUNC + 8	Decreases screen brightness
FUNC + 9	Decreases volume
FUNC + .	Displays Start menu
FUNC + 0	Deletes
FUNC + SP	Aligns the screen (Press ESC to exit.)

**Note:** Blue text below each key indicates these key combinations.



## CTRL key combinations

Pressing the **CTRL** key with another key performs certain functions or modifies the other key to type specific characters.

Key Combination	Function
CTRL + 1	!
CTRL + 2	@
CTRL + 3	#
CTRL + 4	\$
CTRL + 5	%
CTRL + 6	^
CTRL + 7	&
CTRL + 8	(
CTRL + 9	)
CTRL + .	- (minus)
CTRL + 0	*
CTRL + SP	+ (plus)

**Note:** Yellow text below each key indicates these key combinations.

## Program buttons

Use the Program Button feature in the Control Panel to program buttons to execute different functions. The following buttons on the 7100 are preprogrammed for the listed function.

Press and hold the **FUNC** key and press the appropriate function key to execute the indicated function.

Key	Function
F1	Internet Explorer
F 2	Email
F 3	Scan Wedge
F 4	Follett Remote
F 5	Pocket CMD
F 6	Control Panel
F 7	Transcriber

**Note:** Follett Remote should be closed by selecting **File** then **Exit**.

## Wireless radios (wireless communication)

Follett 7100s have a 2.4 GHz 802.11b/g WLAN (Wireless Local Area Network) radio that uses DSSS (Direct Sequence Spread Spectrum) technology. The radio is interoperable with other 802.11b/g, Wi-Fi compliant products, including access points (APs), workstations via PC card adapters, and other wireless portable devices.

By default, the 802.11b/g radio is enabled after each hard reset, which means that the radio begins transmitting a signal as soon as the terminal finishes booting up. The next step is to configure the connection parameters of the radio to connect to a wireless network.

Once you configure the 7100 for your network, you can communicate wirelessly.

- If you are a Destiny customer, you can communicate directly with Destiny.
- If you are a Circulation Plus®/Catalog Plus® or InfoCentre™ customer, you can connect to the Internet.

Establishing a successful wireless connection depends heavily on your network infrastructure. **You need specific information from your network administrator to configure the 7100 for your network.**

## Connecting to a wireless 802.11 b/g wireless network

The 7100 contains an integral Network manager for the on-board 802.11b/g radio.

The Wireless Radio supports the following protocols: WEP, 802.1x, LEAP, TKIP, MD5, EAP-TLS, EAP-TTLS, WPA-PSK, WPA v2.0, PEAP.

For the above protocols that support EAP authentication, the 7100 supports the following methods:

- LEAP
- PEAPv0-MSCHAPV2
- PEAPv1-MSCHAPV2
- PEAPv1-GTC
- PEAPv1-TLS
- FAST-MSCHAPV2
- FAST-GTC
- FAST-TLS
- TLS
- TTLS-MD5
- TTLS-MSCHAPV2
- TTLS-GTC


To communicate with your wireless network, you need to turn the power on to the radio and configure your WLAN settings on the 7100.

## Enabling the WLAN radio driver

The radio driver must be enabled for the radio to transmit a signal. You cannot connect to a network unless the radio is enabled. To enable the driver, tap the **UP** arrow in the lower right corner of the screen, or press **FUNC + 4**.

## Configuring a wireless connection

**Important:** A cold boot of the 7100 could delete the WLAN settings. You may want to record this data in a secure place.

1. To open the network manager, tap  in the taskbar.
2. To enable the radio, tap the up arrow and turn wireless LAN on.
3. Open the **Config** tab and click **New**.  
(If you would rather scan for existing wireless network devices, tap **Scan**.)
4. On the **Network** dialog, type in your SSID (network name).
5. Select the Association Mode of your network configuration from the list.

Select	To connect with
None	No authentication or encryption.
WEP	WEP encryption
IEEE 802.1X (WEP)	WEP encryption and EAP authentication.
WPA-Personal (PSK) WPA2-Personal (PSK)	WPA encryption and PSK authentication.
WPA-Enterprise (EAP) WPA2-Enterprise (EAP)	WPA encryption and EAP authentication.

The fields and options required by the association mode, encryption, and EAP methods appear in the Network Window after each is selected.

6. If required by the association mode, select the **Encryption** method.
7. If required by the association mode, select the **EAP Method**.
8. If required or desired, enter keys or passwords.
9. (Hide the Input Panel, if open) Tap **OK** at the bottom. Back on the **Config** tab, your SSID now appears in the list.

All server-assigned IP addresses use Dynamic Host Configuration Protocol (DHCP).

## Activating a wireless connection

On the **Config** tab, select the network in the list and tap **Activate**. The 7100 attempts to connect to the network according to the parameters you entered above.





Please note that the 7100 will not attempt to connect until you tap **Activate**. The **Config** tab stores all the configurations you have created in the list but activates only one configuration at a time.

[x] appears next to the activated configuration.

To switch connections, simply select it on the **Config** tab and tap **Activate**.

The **Status** tab appears, displaying the connection status.

The radio status icon in the taskbar changes to indicate the status:

Color	Meaning	Status tab status
Gray 	The radio is disabled, idle, not connecting.	NO RADIO RADIO OFF DISCONNECTED INACTIVE
Yellow 	The connection is: Associating (icon stops spinning). Authenticating (icon stops spinning). Negotiating DHCP address (icon spins clockwise). Out-of-Range.	ASSOCIATING AUTHENTICATING
Red 	Authentication failed and the connection failed as a result.	ASSOCIATED but not authenticated
Green 	The connection is authenticated with a valid DHCP address.	COMPLETE

To configure the IP address:

1. Open Internet Explorer and select **View > Internet Options** from the menu.
2. Set your Start page to the IP address of your Destiny application.

## Connecting to a workstation through a cable

To allow your workstation and the 7100 to communicate through a cable, you need the correct cable and Microsoft ActiveSync® software.

### You need the following hardware:

- 7100 communication cable or a HomeBase

The USB cable allows the Follett 7100 to communicate with a workstation or to a network through a USB hub. The 7100 supports full-speed USB communication (USB 1.1). Maximum data transfer rate is 12 Mbps. As shipped, the 7100 defaults to USB communication.

- 7100 power cable from the manufacturer.
- A workstation running one of the following operating systems: Windows® XP; Windows 2000; Windows Me; Windows NT® (4.0 SP6 or higher); or Windows 98 Second Edition.

### You need the following software:

- Windows Mobile Device Center 6.1 (or higher) installed and configured on the workstation for Windows Vista or Windows 7.

If ActiveSync/Mobile Device Center is not installed on your host workstation, you can download and install the most current version from [www.microsoft.com](http://www.microsoft.com).


- ActiveSync 4.1 (or higher) installed on the Windows XP workstation and configured on the 7100.  
(We ship Follett 7100s with ActiveSync already installed.)
- Mobile Device Center 6.1 (or higher) installed on Windows Vista or Windows 7 and ActiveSync configured on the 7100.

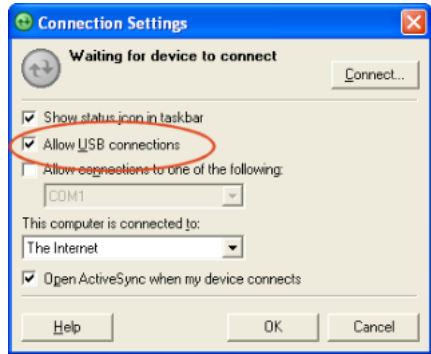
You must set up ActiveSync on your workstation *before* you connect your 7100 for the first time.

## Setting up the workstation

### Windows XP


Once you have installed ActiveSync on the workstation, you must configure it:

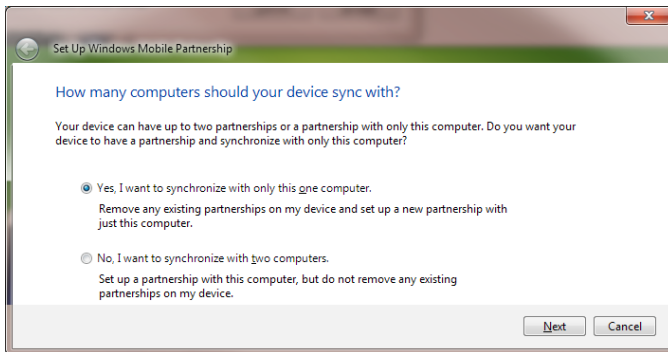
1. Double click the ActiveSync icon  in the system tray.
2. In the Microsoft ActiveSync application, select **File > Connection Settings**.
3. Select the **Allow USB connections** checkbox:
4. Click **OK** to close Connections settings, and then select **File > Close** to close the ActiveSync application.



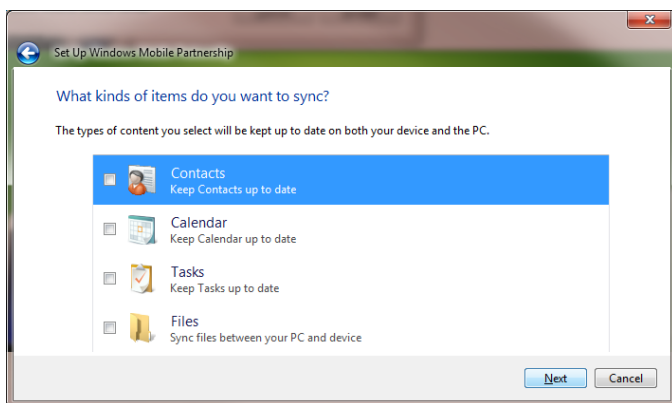
### Windows Vista or Windows 7

Once you have installed Mobile Device Center on Windows Vista or Windows 7, you must configure it:

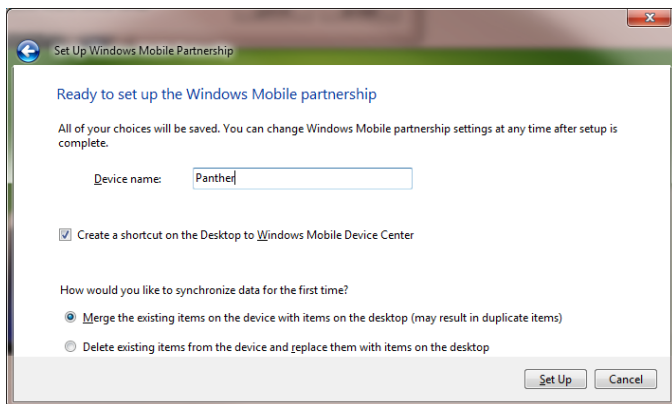
1. Double click the ActiveSync icon  in the system tray.
2. In the Microsoft Mobile Device Center application, select **Set up your device**.
3. In the Set Up Windows Mobile Partnership window, select the second option, **No, I want a synchronize with two computers**, and click **Next**.



4. Leave everything unchecked on the What kinds of items do you want to sync? screen and click **Next**.



5. Name your device and leave the first option checked (Merge the existing items on the device with the items on the desktop). Select **Set Up**.



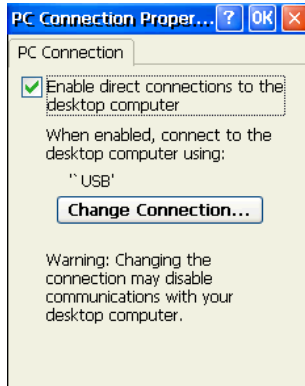
Setup will finish and the partnership will be established.

## Setting up the 7100

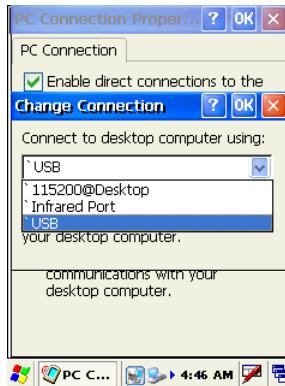
As shipped, the 7100 defaults to USB communication with your workstation.

To verify or change the default setting:

1. Tap  (Start) > **Settings** > **Control Panel** > **PC Connection**.



2. Tap **Change Connection** to change the current settings.

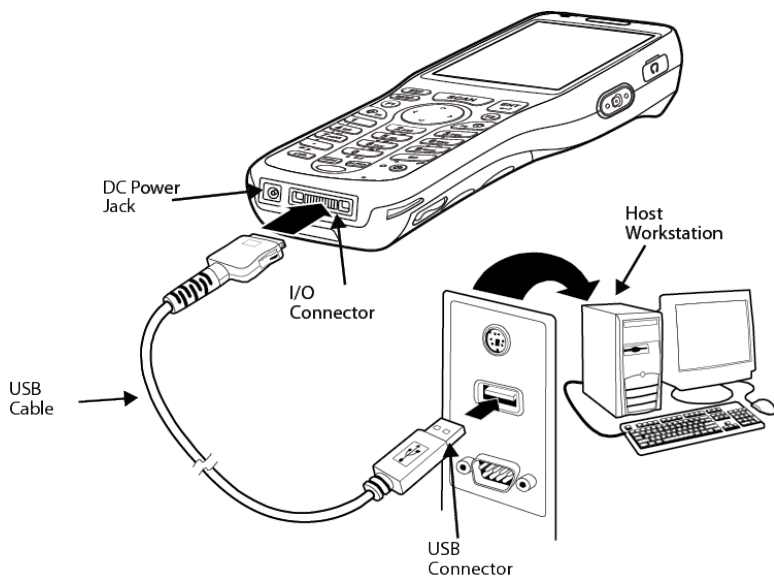


Connection Options	Select an option to ...
115200@Desktop	Establish an RS-232 connection.
Infrared Port	Establish an ActiveSync connection via the IrDA Port.
USB	Establish a USB connection

3. Double tap **OK** to close PC Connection, and tap **OK** again to close PC Connection Properties.



## Connecting the USB cable



Connect the USB cable to the I/O connector on the 7100 and to a USB port on the workstation.

This is a communication-only cable unless you plug the power cable into the power port.

## Connecting the power cable

The Power Port on the back end of the USB connector fits the power cable that comes with each Follett 7100. To charge the device while communicating, connect the power cable to the Power Port.


## Communicating with the 7100

After setting up both the workstation and the 7100, an ActiveSync connection should be automatic.

When you connect the 7100 to a communication peripheral, such as the communication cable, the 7100 opens ActiveSync to establish a connection automatically.

## Uploading Follett Remote files from the 7100 to your workstation

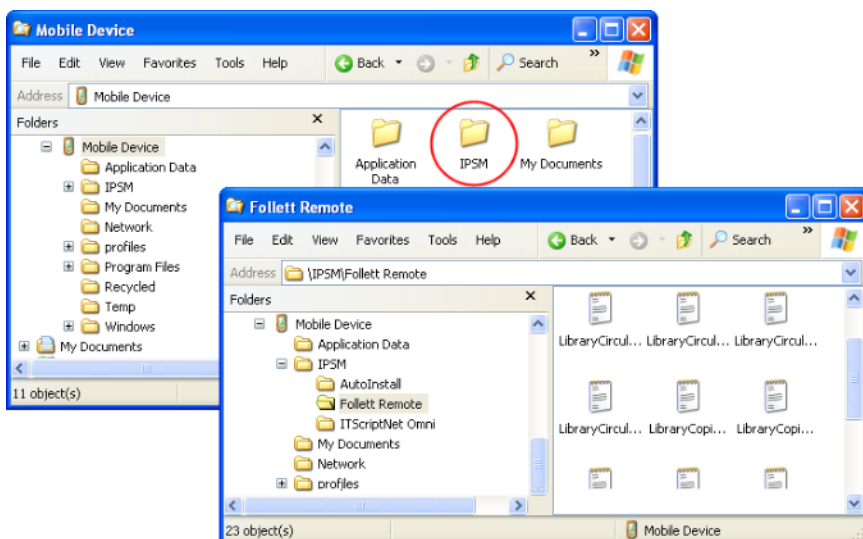
### ActiveSync on Windows XP

When you have connected the 7100 to the workstation, ActiveSync should open automatically. If not, open ActiveSync on the workstation by double clicking the ActiveSync icon  in the system tray.

1. Click **Explore** on its toolbar. The Mobile Device folder opens in Windows Explorer.
2. Locate and transfer your Follett Remote files by dragging and dropping—or copying and pasting—them to a location on your workstation, just as you would when moving any files between folders.



You will find your Follett Remote files in \IPSM\Follett Remote.



## Uploading the files from the workstation to your application

Once you have moved your Follett Remote files to your workstation, you can upload them to your application. In Destiny, once you regain your wireless connection, you can upload the files through the browser.

## Circulation Plus/Catalog Plus v6.4

You can upload Follett Remote data files anywhere that accepts files from a PHD:

### Cataloging

**Edit > Update Copies via PHD**

**Edit > Remove Categories via PHD**

**Edit > Delete Copies via PHD**

### Circulation Desk

**Circulation > Remote Circulation**

### Inventory

**Inventory > Remote Inventory**

### Patron Maintenance

**Edit > Update Patrons via PHD**

**Edit > Delete Patrons via PHD**

### Reports

**Bibliography Report > Select by: Titles via PHD**

**Title List > Select by: Titles via PHD**

**Patron Barcode List > Select by: Patrons via PHD**

**Patron Cards > Select by: Patrons via PHD**

**Patron Name List > Select by: Patrons via PHD**

To upload a file:


1. Select **Data File** from the **Select the PHD model** list.
2. Click **Browse** to locate and select your Follett Remote file.
3. To use a transaction date other than the one shown, enter the desired **Date**.
4. To begin uploading the file, click **Proceed**.

### InfoCentre v3.0

To process Follett Remote circulation transactions:

1. On the **Admin** tab, click **Circulation**.
2. Click **Follett Remote**.
3. On the Follett Remote window that appears, click **Load File**.
4. Browse to and select your Follett Remote file.
5. To use a transaction date other than the one shown, click **Transaction Date** and select one.
6. To use a due date other than the one shown, click **Due Date** and select one.
7. To begin uploading the file, click **Process**.

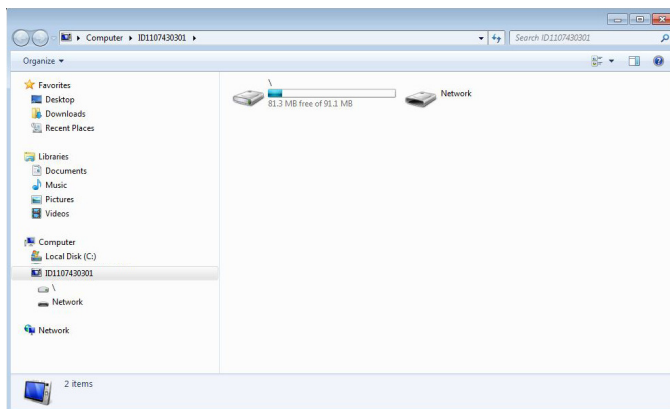
### Mobile Device Center on Windows Vista or Windows 7

When you have connected the 7100 to the workstation, Mobile Device Center should open automatically. If not, open ActiveSync on the workstation by double clicking the ActiveSync icon  in the system tray.

1. Under the **File Management** option, select **Browse the contents of your device**.



2. A Windows Explorer screen opens and displays the Contents of the device.



3. Navigate to \IPSM\Follett Remote\ to locate all your Follett remote files.

## Destiny

You can upload Follett Remote data files from several pages in Destiny.

If you have transferred the Follett Remote files to your workstation:

1. Open the appropriate screen and select your options.
2. To locate and select your barcode file, click **Browse**.
3. To start the processing, click the **Upload**, **Update**, or **Run Report** button at the bottom of the screen (depending on the screen).
4. Check the job summary in **Job Manager** in the **Back Office** tab to review any exceptions.

If you are uploading the Follett Remote files wirelessly:

1. After logging in, tap **Upload File**.
2. On the **Upload File** page, select the type of file you are uploading.
3. For offline circulation, verify or change the **Transaction Date**.  
For inventory, select the one you are working on.  
In Textbook Manager, select your **Location**.  
For textbook or asset transfers, select the destination site.

## Getting Started with the Follett 7100

---

4. Tap **Browse** to locate and select your Follett Remote file in the \IPSM\Follett Remote folder.
5. Tap **Upload**.

Once you see the message, **Your uploaded file has been sent to the Job Manager**, you can continue with other tasks.

## Finishing up

Once you have uploaded your files to your application and no longer need them, make sure to delete them from both your workstation and your 7100.

When your application has finished processing the file, make sure to review the exceptions report or **Job Summary**.

## Problem Resolution

If your 7100 exhibits erratic operation or does not seem to be functioning correctly, you may wish to try a warm reboot by using the stylus to press the small recessed **Software Reset Key** next to the **Power** key. If this still does not correct the problem, you can try a cold boot by pressing the reset button and then pressing and holding the **Power** key.

